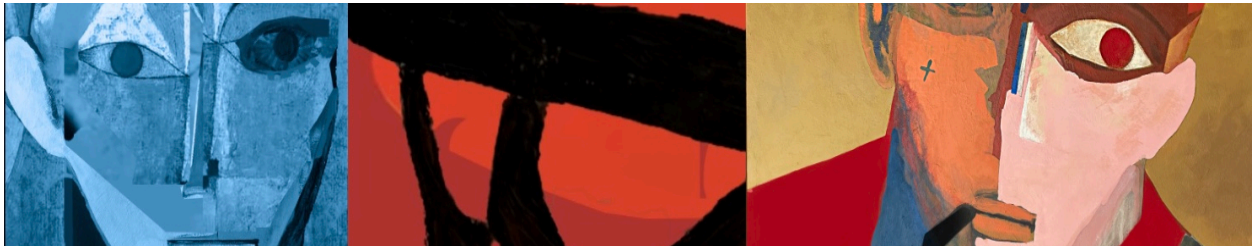


Myke Reilly in San Miguel de Allende

Artist Statement

Art, for me, is a language that transcends boundaries—a raw, intuitive expression that bridges the physical and emotional landscapes we inhabit. My journey began in San Francisco’s vibrant art and design scene, where sound, light, and movement shaped my early explorations. However, it was in San Miguel de Allende, amidst the colonial architecture and deeply rooted artistic traditions, that I rediscovered the purity of the painter’s gesture.



Details from recent paintings - Androgyne - Roja - Escorpion

My work is a meditation on form, rhythm, and texture. Influenced by mid-century modernism, I distill visual elements to their essence, allowing raw materials—pigments, sand, marble dust, resin—to speak in their own voice. Each canvas becomes a layered field where structure and spontaneity collide, evoking landscapes, architectural fragments, and visceral memories.

Moving to San Miguel de Allende reconnected me with a slower, more tactile approach to making art. Here, the light is different; the pace of life invites deeper reflection. My practice has evolved into a dialogue between the bold minimalism of my San Francisco roots and the organic sensibilities inspired by Mexico’s rich artistic heritage.

I believe abstraction allows viewers to project their own narratives and emotions onto the work. It’s not about defining a story but creating a space where form and texture resonate on a personal level. My mission is to craft visual experiences that are at once grounded and expansive—works that quietly assert themselves in a space yet leave room for contemplation and interpretation.

Ask ChatGPT